

Product manual - Spare parts

IRB 6640-180/2.55

IRB 6640-235/2.55

IRB 6640-205/2.75

IRB 6640-185/2.8

IRB 6640-130/3.2

IRB 6640ID-200/2.55

IRB 6640ID-170/2.75

M2004

Document ID: 3HAC038330-001

Revision: -

The information in this manual is subject to change without notice and should not be construed as a commitment by ABB. ABB assumes no responsibility for any errors that may appear in this manual.

Except as may be expressly stated anywhere in this manual, nothing herein shall be construed as any kind of guarantee or warranty by ABB for losses, damages to persons or property, fitness for a specific purpose or the like.

In no event shall ABB be liable for incidental or consequential damages arising from use of this manual and products described herein.

This manual and parts thereof must not be reproduced or copied without ABB's written permission, and contents thereof must not be imparted to a third party nor be used for any unauthorized purpose. Contravention will be prosecuted.

Additional copies of this manual may be obtained from ABB at its then current charge.

Copyright 2010 ABB All rights reserved.

ABB AB
Robotics Products
SE-721 68 Västerås
Sweden

Overview of this manual 7
 Product documentation, M2004 8

1 Spare parts and exploded views 11

1.1 Spare parts - Balancing device 11
 1.2 Spare part - Lower arm 15
 1.3 Spare Parts - Motors 17
 1.4 Spare parts - Wrist unit 22
 1.5 Spare Parts - Axis 6 complete. 26
 1.6 Spare parts - Turning disk 27
 1.7 Spare parts - Gearboxes 28
 1.8 Spare parts - Upper arm extenders 34
 1.9 Spare parts - SMB. 36
 1.10 Spare parts - Manipulator harness 38

Overview of this manual

About this manual

This manual contains spare parts for:

- IRB 6640 and all its variants.

Usage

This manual shall be used as a complement to the Product manual for IRB 6640 during:

- maintenance work
- repair work.

Who should read this manual?

This manual is intended for:

- maintenance personnel
- repair personnel.

Prerequisites

A maintenance/repair/installation craftsman working with an ABB Robot must:

- be trained by ABB and have the required knowledge of mechanical and electrical installation/repair/maintenance work.

Organization of chapters

The manual is organized in the following chapters:

Chapter	Contents
1. Spare parts and exploded view	Complete spare part list and complete list of robot components shown in exploded views.

References

Reference	Document Id
Product manual - IRB 6640	3HAC026876-001
Circuit diagram	3HAC025744-001

Revisions

Revision	Description
-	First edition

Product documentation, M2004

Categories for manipulator documentation

The manipulator documentation is divided into a number of categories. This listing is based on the type of information in the documents, regardless of whether the products are standard or optional.

All documents listed can be ordered from ABB on a DVD. The documents listed are valid for M2004 manipulator systems.

Product manuals

All hardware, manipulators and controllers will be delivered with a **Product manual** that contains:

- Safety information.
 - Installation and commissioning (descriptions of mechanical installation, electrical connections).
 - Maintenance (descriptions of all required preventive maintenance procedures including intervals).
 - Repair (descriptions of all recommended repair procedures including spare parts).
 - Additional procedures, if any (calibration, decommissioning).
 - Reference information (article numbers for documentation referred to in Product manual, procedures, lists of tools, safety standards).
 - Parts list.
 - Foldouts or exploded views.
 - Circuit diagrams (or references to circuit diagrams).
-

Technical reference manuals

The technical reference manuals describe the manipulator software in general and contain relevant reference information.

- **RAPID Overview:** An overview of the RAPID programming language.
 - **RAPID Instructions, Functions and Data types:** Description and syntax for all RAPID instructions, functions, and data types.
 - **RAPID Kernel:** A formal description of the RAPID programming language.
 - **System parameters:** Description of system parameters and configuration workflows.
-

Application manuals

Specific applications (for example software or hardware options) are described in **Application manuals**. An application manual can describe one or several applications.

An application manual generally contains information about:

- The purpose of the application (what it does and when it is useful).
- What is included (for example cables, I/O boards, RAPID instructions, system parameters, CD with PC software).
- How to use the application.
- Examples of how to use the application.

Continues on next page

Operating manuals

The operating manuals describe hands-on handling of the products. The manuals are aimed at those having first-hand operational contact with the product, that is production cell operators, programmers, and trouble shooters.

The group of manuals includes:

- **Emergency safety information**
- **General safety information**
- **Getting started, IRC5 and RobotStudio**
- **IRC5 with FlexPendant**
- **RobotStudio**
- **Introduction to RAPID**
- **Trouble shooting**, for the controller and manipulator.

1 Spare parts and exploded views

1.1. Spare parts - Balancing device

Balancing device - Design 1

Pos	Spare part no.	Part no. (WebConfig)	180/ 2.55	235/ 2.55	210/ 2.55	205/ 2.75	185/ 2.8	130/ 3.2	200/ 2.55 (ID)	170/ 2.75 (ID)
G	3HAC028470-001 <i>Standard Foundry Plus</i>	3HAC026268-001	X	X	X	X	X	X	X	X
G	3HAC033363-001 <i>Foundry Prime</i>	3HAC027987-001		X			X			
G	3HAC030868-001 <i>Cleanroom</i>	3HAC026268-001	X	X	X	X	X	X		

Maintenance sets, balancing device- Design 1

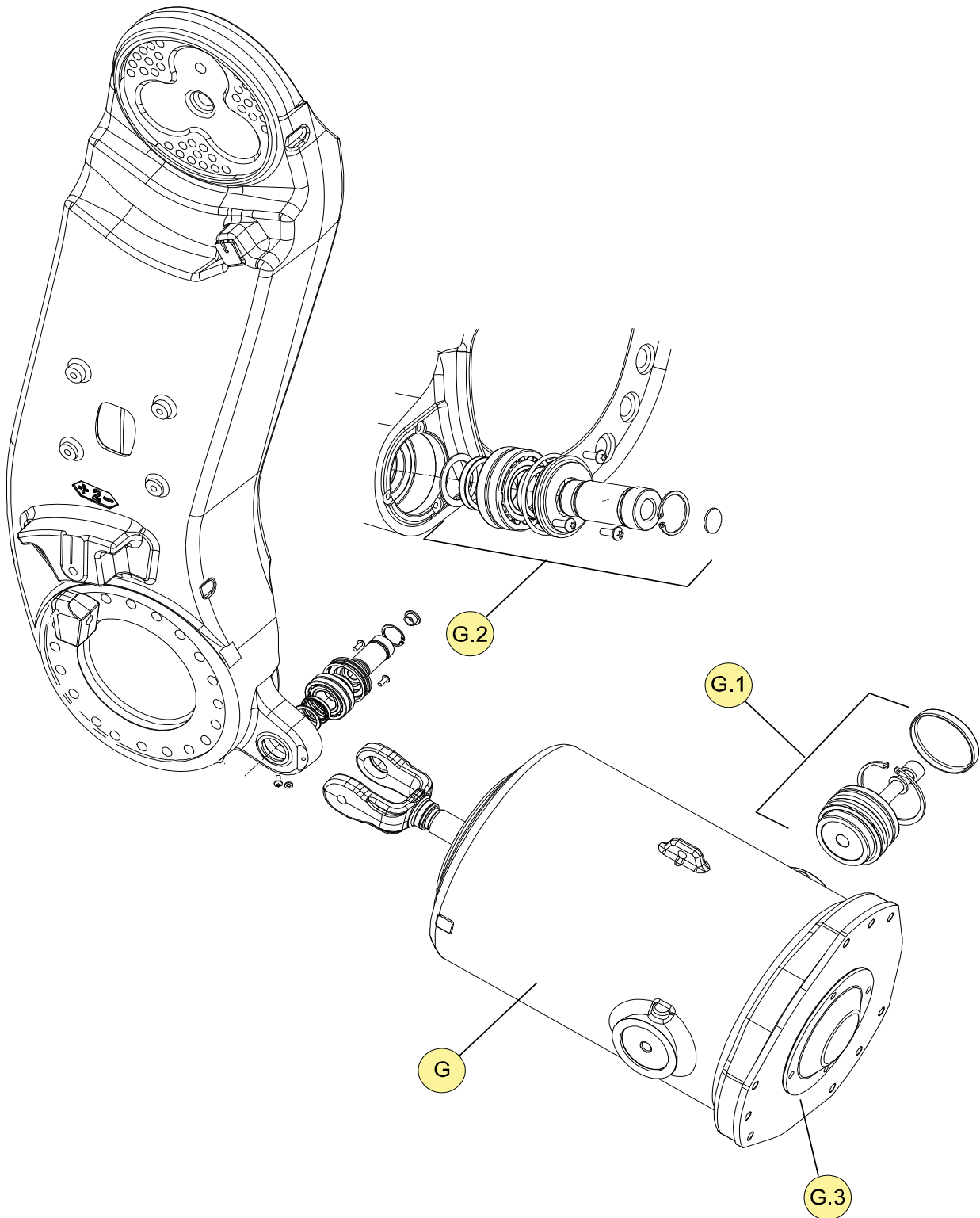
Pos	Part no.	Description	180/ 2.55	235/ 2.55	210/ 2.55	205/ 2.75	185/ 2.8	130/ 3.2	200/ 2.55 (ID)	170/ 2.75 (ID)
G.1	3HAC029288-001	Maintenance set, Cradle	X	X	X	X	X	X	X	X
G.2	3HAC029054-001	Maintenance set, Shaft	X	X	X	X	X	X	X	X
G.3	3HAC17188-1	Gasket, End cover	X	X	X	X	X	X	X	X

1 Spare parts and exploded views

1.1. Spare parts - Balancing device

Continued

Design 1



xx070000341

© Copyright 2010 ABB. All rights reserved.

Continues on next page

1 Spare parts and exploded views

1.1. Spare parts - Balancing device

Continued

Balancing device - Design 2

Pos	Spare part no.	Part no. (WebConfig)	180/ 2.55	235/ 2.55	210/ 2.55	205/ 2.75	185/ 2.8	130/ 3.2	200/ 2.55 (ID)	170/ 2.75 (ID)
G	3HAC032124-003 <i>Standard Foundry Plus</i>	3HAC032124-001	X	X	X	X	X	X	X	X
G	3HAC033366-001 <i>Foundry Prime</i>	3HAC034865-001		X			X			
G	3HAC033372-001 <i>Cleanroom</i>	3HAC032124-001	X	X	X	X	X	X		

Maintenance sets, balancing device - Design 2

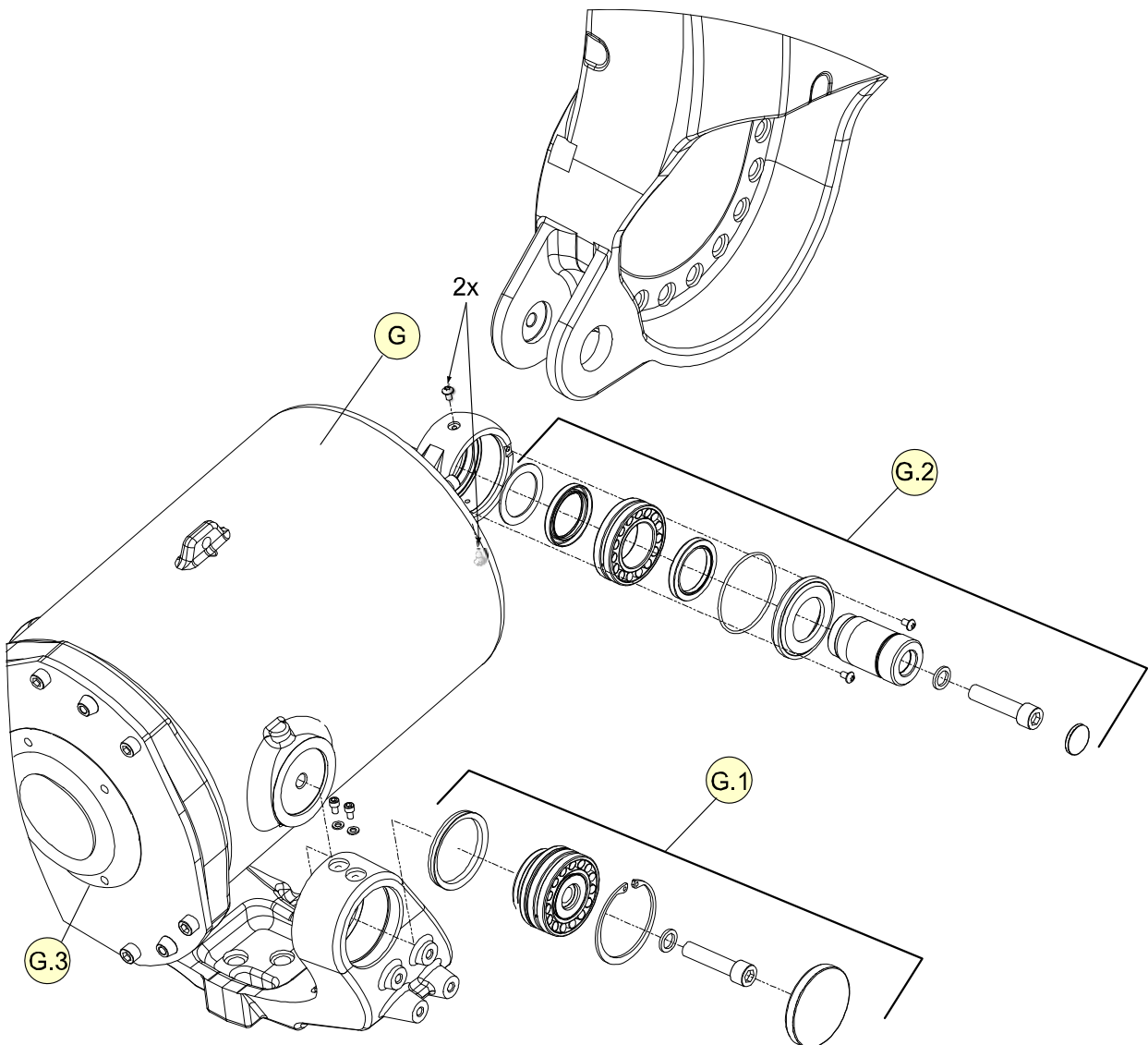
Pos	Part no.	Description	180/ 2.55	235/ 2.55	210/ 2.55	205/ 2.75	185/ 2.8	130/ 3.2	200/ 2.55 (ID)	170/ 2.75 (ID)
G.1	3HAC033413-001	Maintenance set, Cradle	X	X	X	X	X	X	X	X
G.2	3HAC033411-001	Maintenance set, Shaft	X	X	X	X	X	X	X	X
G.3	3HAC17188-1	Gasket, End cover	X	X	X	X	X	X	X	X

1 Spare parts and exploded views

1.1. Spare parts - Balancing device

Continued

Design 2



xx0800000253

© Copyright 2010 ABB. All rights reserved.

1.2. Spare part - Lower arm

Spare part list - Design 2

Pos	Spare Part no.	Part no. (WebConfig)	180/ 2.55	235/ 2.55	210/ 2.55	205/ 2.75	185/ 2.8	130/ 3.2	200/ 2.55 (ID)	170/ 2.75 (ID)
J.2	3HAC034056-001 <i>Standard Foundry Plus</i>	3HAC031985-001	X	X	X		X		X	
J.2	3HAC033733-006 <i>Foundry Prime</i>	3HAC034868-001		X			X			
J.2	3HAC034056-004 <i>Cleanroom</i>	3HAC031985-001	X	X	X		X			
J.2	3HAC034056-002 (Long lower arm) <i>Standard Foundry Plus</i>	3HAC032177-001				X		X		X
J.2	3HAC034056-005 (Long lower arm) <i>Cleanroom</i>	3HAC032177-001				X		X		

Lower arm - Other parts

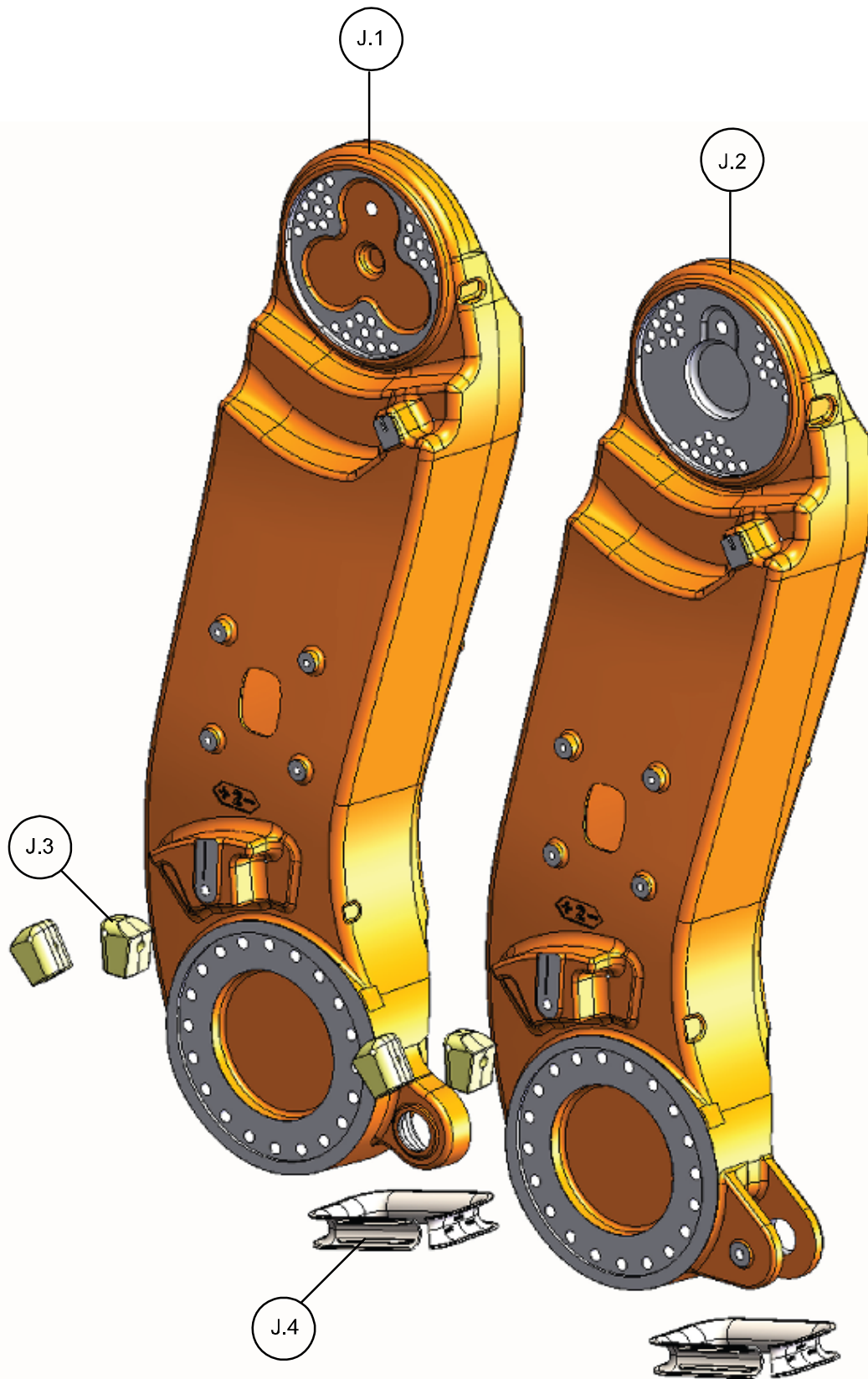
Pos	Part no.	Description	180/ 2.55	235/ 2.55	210/ 2.55	205/ 2.75	185/ 2.8	130/ 3.2	200/ 2.55 (ID)	170/ 2.75 (ID)
J.3	3HAC12991-1	Damper, axis 2	X	X	X	X	X	X	X	X
J.4	3HAC14300-1	Cable protector	X	X	X	X	X	X	X	X

1 Spare parts and exploded views

1.2. Spare part - Lower arm

Continued

Illustration - Spare part lower arm Design 1 (J1) and Design 2 (J2)



xx0800000429

© Copyright 2010 ABB. All rights reserved.

1.3. Spare Parts - Motors

Motors axis 1 (including pinion)

Pos	Spare part no.	Part no. (WebConfig)	180/ 2.55	235/ 2.55	210/ 2.55	205/ 2.75	185/ 2.8	130/ 3.2	200/ 2.55 (ID)	170/ 2.75 (ID)
A	3HAC033182-001 Type A2 Standard Foundry Plus	3HAC024519-001	X	X	X	X	X	X	X	X
A	3HAC034783-003 Type A2NB Foundry Prime	3HAC027514-004		X			X			
A	3HAC030794-001 Type A2 Cleanroom	3HAC024519-001	X	X	X	X	X	X		

Motors axis 2 (including pinion)

Pos	Spare part no.	Part no. (WebConfig)	180/ 2.55	235/ 2.55	210/ 2.55	205/ 2.75	185/ 2.8	130/ 3.2	200/ 2.55 (ID)	170/ 2.75 (ID)
B	3HAC033163-001 Type M13 Standard Foundry Plus	3HAC025724-001	X	X	X	X	X	X	X	X
B	3HAC034782-003 Type M13NB Foundry Prime	3HAC031145-001		X			X			
B	3HAC030800-001 Type M13 Cleanroom	3HAC025724-001	X	X	X	X	X	X	X	

Pos	Part no.	Description
B	3HAC026770-001	Pinion RV550E

1 Spare parts and exploded views

1.3. Spare Parts - Motors

Continued

Motors axis 3 (including pinion)

Pos	Spare part no.	Part no. (WebConfig)	180/ 2.55	235/ 2.55	210/ 2.55	205/ 2.75	185/ 2.8	130/ 3.2	200/ 2.55 (ID)	170/ 2.75 2.75
C	3HAC033203-001 Type M9 Standard Foundry Plus	3HAC17489-9	X	X	X	X	X	X	X	X
C	3HAC034832-003 Type M9NB Foundry Prime	3HAC027514-009		X			X			
C	3HAC030825-001 Type M9 Cleanroom	3HAC17489-9	X	X	X	X	X	X		

Pos	Part no.	Description
C	3HAC10122-15	Pinion RV410F

Motors axis 4 (including pinion)

Pos	Spare part no.	Part no. (WebConfig)	180/ 2.55	235/ 2.55	210/ 2.55	205/ 2.75	185/ 2.8	130/ 3.2	200/ 2.55 (ID)	170/ 2.75 2.75
D	3HAC033209-001 Type M7 Standard Foundry Plus	3HAC17484-7	X							
D	3HAC032501-001 Type M7 Cleanroom	3HAC17484-7	X							
D	3HAC033207-001 Type M10 Standard Foundry Plus	3HAC17484-10		X	X	X	X	X	X	X
D	3HAC035065-003 Type M10NB Foundry Prime	3HAC027514-010		X			X			
D	3HAC030826-001 Type M10 Cleanroom	3HAC17484-10		X	X	X	X	X	X	X

© Copyright 2010 ABB. All rights reserved.

Continues on next page

Continued

Motors axis 5 IRB6640 (excluding pinion)

Pos	Spare part no.	Part no. (WebConfig)	180/ 2.55	235/ 2.55	210/ 2.55	205/ 2.75	185/ 2.8	130/ 3.2	200/ 2.55 (ID)	170/ 2.75 (ID)
E	3HAC17487-7 Type M7 Standard Foundry Plus Cleanroom	3HAC17487-7	X							
E	3HAC17487-10 Type M10 Standard Foundry Plus Cleanroom	3HAC17487-10		X	X	X	X	X		
E	3HAC033223-001 Type M10NB Foundry Prime	3HAC027514-010		X			X			

Motor axis 5 IRB 6640ID (including pinion)

Pos	Spare part no.	Part no. (WebConfig)	180/ 2.55	235/ 2.55	210/ 2.55	205/ 2.75	185/ 2.8	130/ 3.2	200/ 2.55 (ID)	170/ 2.75 (ID)
E	3HAC033236-001 Type PM2 Standard Foundry Plus	3HAC12638-1							X	X

1 Spare parts and exploded views

1.3. Spare Parts - Motors

Continued

Motors axis 6 (including pinion)

Pos	Spare part no.	Part no. (WebConfig)	180/ 2.55	235/ 2.55	210/ 2.55	205/ 2.75	185/ 2.8	130/ 3.2	200/ 2.55 (ID)	170/ 2.75 (ID)
F	3HAC033224-001 Type M8 Standard Foundry Plus	3HAC17484-8	X							
F	3HAC030828-001 Type M8 Cleanroom	3HAC17484-8	X							
F	3HAC033234-001 Type M8 Standard Foundry Plus	3HAC17484-8		X	X	X	X	X		
F	3HAC034862-003 Type M8NB Foundry Prime	3HAC027514-008		X			X			
F	3HAC030829-001 Type M8 Cleanroom	3HAC17484-8		X	X	X	X	X		
F	3HAC033225-001 Type PM1 Standard Foundry Plus	3HAC12638-3							X	X
F	3HAC10122-24 Pinion RV40E		X							
F	3HAC11173-3 Pinion RV70F			X	X	X	X	X		

Motors - Other parts

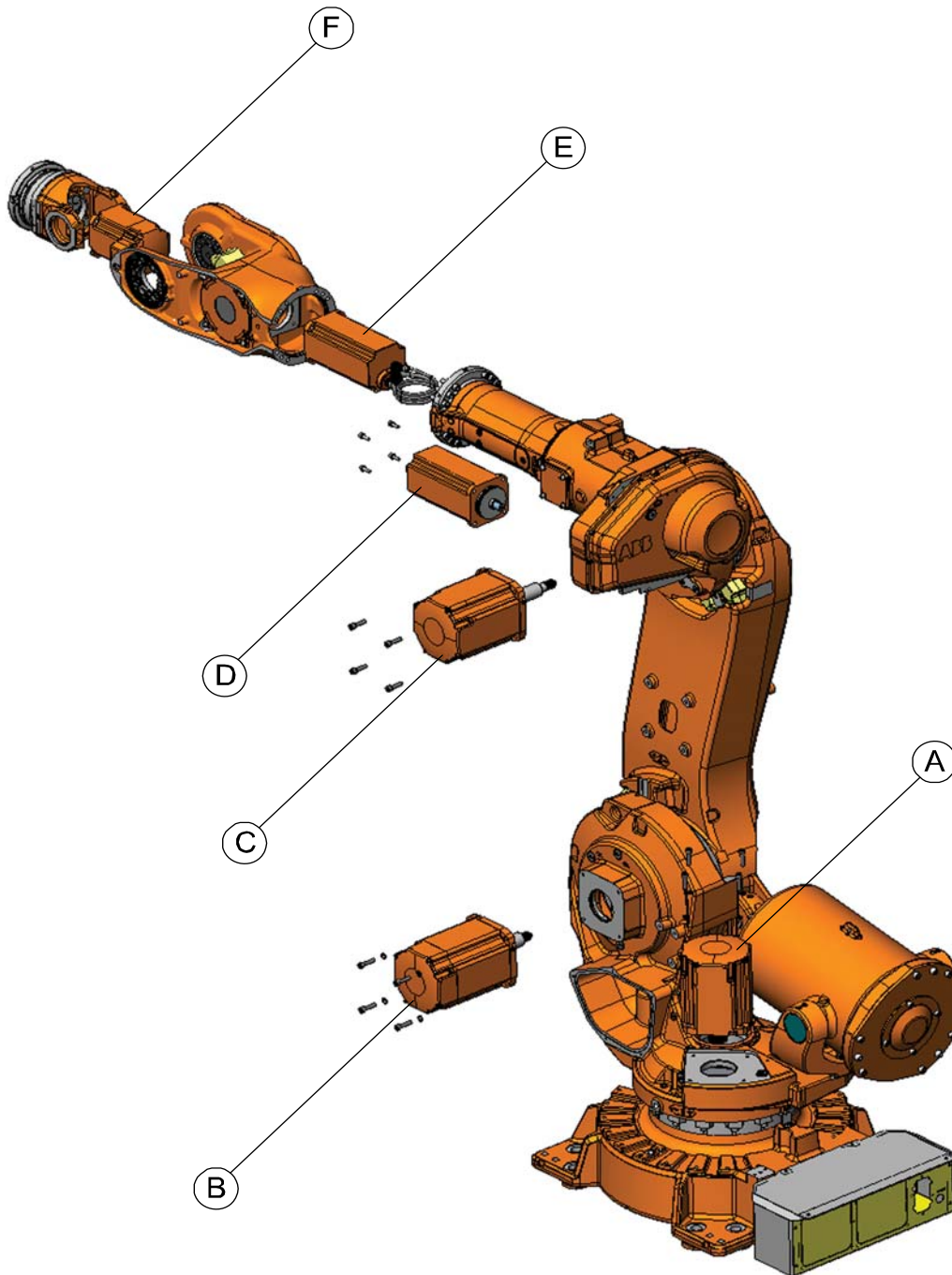
Pos	Part no.	Description	180/ 2.55	235/ 2.55	210/ 2.55	205/ 2.75	185/ 2.8	130/ 3.2	200/ 2.55 (ID)	170/ 2.75 (ID)
	3HAC030161-001	Protection plugs	X	X	X	X	X	X		
	3HAC026511-001	Elbow fittings	X	X	X	X	X	X		
	21522012-430	O-ring (89.5x3)	X	X	X	X	X	X		
	3HAB3772-22	O-ring (67.5x3.0)							X	X
	3HAC3438-1	Motorplate Motor, axes 1-5	X	X	X	X	X	X		
	3HAC033206-001	Gasket Motor axis 6	X	X	X	X	X	X		
	3HAC033489-001	Gasket, cover Motor axis 6	X	X	X	X	X	X		

Continues on next page

Continued

Pos	Part no.	Description	180/ 2.55	235/ 2.55	210/ 2.55	205/ 2.75	185/ 2.8	130/ 3.2	200/ 2.55 (ID)	170/ 2.75 (ID)
	3HAC7941-28	Set of shims								

Illustration



© Copyright 2010 ABB. All rights reserved.

xx0700000383

1 Spare parts and exploded views

1.4. Spare parts - Wrist unit

1.4. Spare parts - Wrist unit

Spare Parts - Wrist, type 1

Pos	Spare Part no.	Part no. (WebConfig)	180/ 2.55	235/ 2.55	210/ 2.55	205/ 2.75	185/ 2.8	130/ 3.2	200/ 2.55 (ID)	170/ 2.75 (ID)
H	3HAC16627-3 <i>Standard Foundry Plus</i>	3HAC8114-1 or 3HAC8114-6	X							
H	3HAC17372-2 <i>Insulated</i>	3HAC8114-7	X							
H	3HAC033868-001 <i>Cleanroom</i>	3HAC030279-001	X							

Spare Part - Wrist, type 2

Pos	Spare Part no.	Part no. (WebConfig)	180/ 2.55	235/ 2.55	210/ 2.55	205/ 2.75	185/ 2.8	130/ 3.2	200/ 2.55 (ID)	170/ 2.75 (ID)
H	3HAC16626-2 <i>Standard Foundry Plus</i>	3HAC8114-3 or 3HAC8114-5		X	X	X	X	X		
H	3HAC16626-3 <i>Insulated</i>	3HAC8114-8		X	X	X	X	X		
H	3HAC026879-002 <i>Foundry Prime</i>	3HAC034863-001		X			X			
H	3HAC030281-003 <i>Cleanroom</i>	3HAC030281-001		X	X	X	X	X		

Spare Part - Wrist, Process

Pos	Spare Part no.	Part No. (WebConfig)	180/ 2.55	235/ 2.55	210/ 2.55	205/ 2.75	185/ 2.8	130/ 3.2	200/ 2.55 (ID)	170/ 2.75 (ID)
	3HAC024793-001 <i>Standard Foundry Plus</i>	3HAC023639-001							X	X

Continued

Spare part - Other parts

Pos	Spare part no.	Part no. (WebConfig)	180/ 2.55	235/ 2.55	210/ 2.55	205/ 2.75	185/ 2.8	130/ 3.2	200/ 2.55 (ID)	170/ 2.75 (ID)
H.4	3HAC8081-10 Gear cover (Gasket included) <i>Standard</i> <i>Foundry Plus</i>	3HAC8081-8	X	X	X	X	X	X		
H.4	3HAC8081-11 Gear cover (Gasket included) <i>Cleanroom</i>	3HAC8081-8	X	X	X	X	X	X		
H.4	3HAC037426-003 Gear cover (Gasket included) <i>Foundry Prime</i>	3HAC037426-001		X			X			
H.4	3HAC024810-001 Gear cover (Gasket included)	3HAC024810-001							X	X
H.5	3HAC022172-003 Cable cover <i>Standard</i> <i>Foundry Plus</i>	3HAC022172-001	X	X	X	X	X	X		
H.5	3HAC022172-004 Cable cover <i>Cleanroom</i>	3HAC022172-001	X	X	X	X	X	X		
H.5	3HAC034932-002 Cable cover <i>Foundry Prime</i>	3HAC034932-001		X			X			
H.6	- Support bearing <i>Standard</i> <i>Foundry Plus</i> <i>Cleanroom</i>	3HAC7941-32	X	X	X	X	X	X		
H.6	- Support bearing <i>Foundry Prime</i>	3HAC027205-001		X			X			
H.7	- Damper axis 5	3HAB4337-2								
H.8	- Sync. plate (Wrist, type 1)	3HAC025565-001	X							
H.8	- Sync. plate (Wrist, type 2)	3HAC025581-001		X	X	X	X	X		

Continues on next page

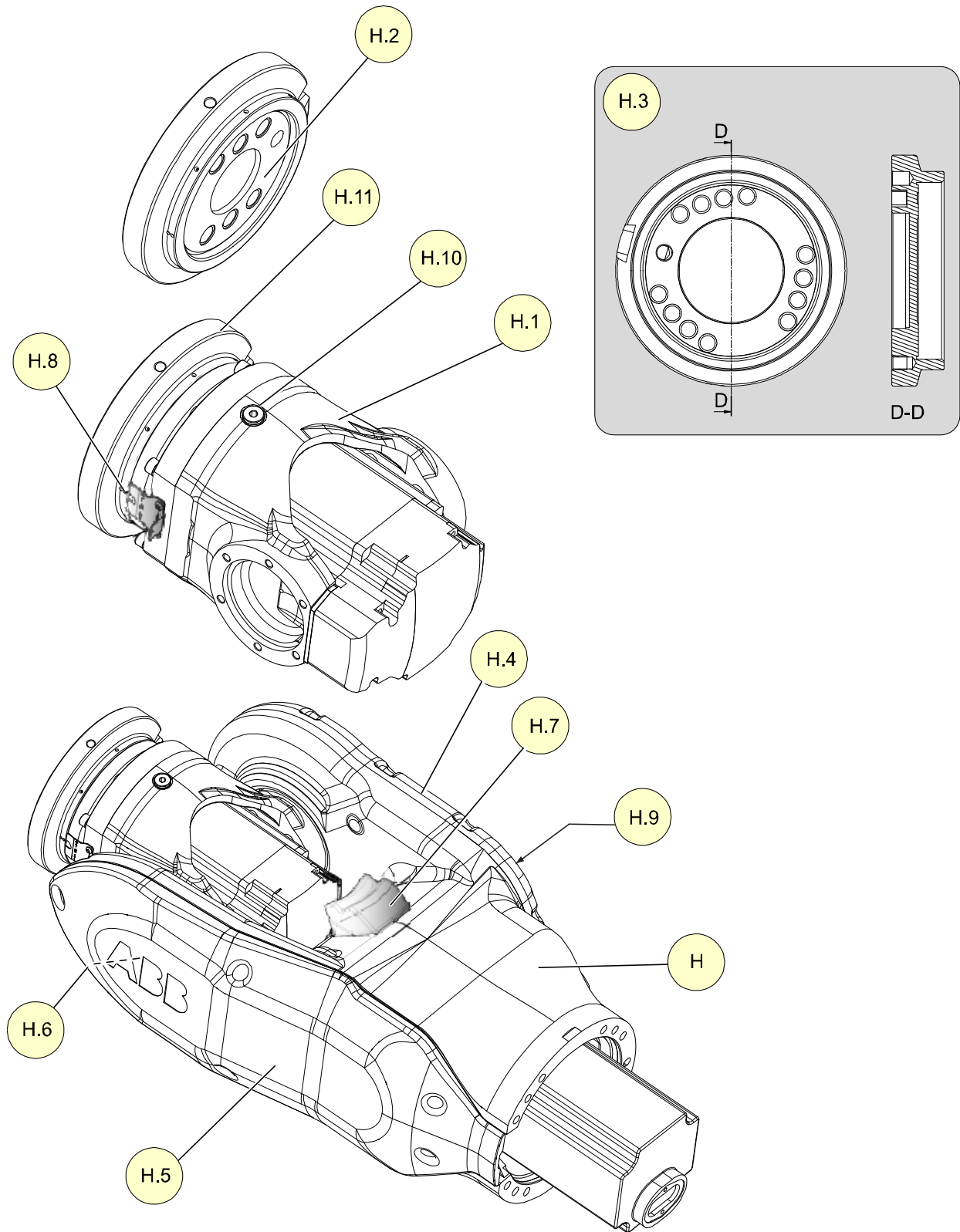
1 Spare parts and exploded views

1.4. Spare parts - Wrist unit

Continued

Pos	Spare part no.	Part no. (WebConfig)	180/ 2.55	235/ 2.55	210/ 2.55	205/ 2.75	185/ 2.8	130/ 3.2	200/ 2.55 (ID)	170/ 2.75 (ID)
H.9	- Magnetic plug G1/2"	3HAC16721-1	X	X	X	X	X	X	X	X
H.10	- Magnetic plug G1/4"	25222122-1	X	X	X	X	X	X		
H.10	- Sealing for magnetic plug G1/4"	3HAC029646-001								
H.11	- Protection cover (Cal. axis 6)	3HAC14263-1	X	X	X	X	X	X	X	X

Illustration wrist



© Copyright 2010 ABB. All rights reserved.

xx0800000397

1 Spare parts and exploded views

1.5. Spare Parts - Axis 6 complete

1.5. Spare Parts - Axis 6 complete

Axis 6 complete, Wrist type 1

Pos	Spare Part no.	Part no. (WebConfig)	180/ 2.55	235/ 2.55	210/ 2.55	205/ 2.75	185/ 2.8	130/ 3.2	200/ 2.55 (ID)	170/ 2.75 (ID)
H.1	3HAC16032-3 <i>Standard Foundry Plus</i>	3HAC030147-001 or 3HAC16032-1	X							
H.1	3HAC17255-2 <i>Insulated</i>	3HAC025156-001	X							
H.1	3HAC030278-002 <i>Cleanroom</i>	3HAC030278-001	X							

Axis 6 complete, Wrist type 2

Pos	Spare Part no.	Part no. (WebConfig)	180/ 2.55	235/ 2.55	210/ 2.55	205/ 2.75	185/ 2.8	130/ 3.2	200/ 2.55 (ID)	170/ 2.75 (ID)
H.1	3HAC13980-4 <i>Standard Foundry Plus</i>	3HAC030141-001		X	X	X	X	X		
H.1	3HAC17371-3 <i>Insulated</i>	3HAC025177-001		X	X	X	X	X		
H.1	3HAC028490-001 <i>Foundry Prime</i>	3HAC034864-001		X			X			
H.1	3HAC030280-002 <i>Cleanroom</i>	3HAC030280-001		X	X	X	X	X		

1.6. Spare parts - Turning disk

Turning disk, type 1

Pos	Spare part no.	Part no. (WebConfig)	180/ 2.55	235/ 2.55	210/ 2.55	205/ 2.75	185/ 2.8	130/ 3.2	200/ 2.55 (ID)	170/ 2.75 (ID)
H.2	3HAC030264-001 <i>Standard</i> <i>Foundry Plus</i> <i>Cleanroom</i>	3HAC030264-001	X							
	21212518-577 M14x25, 12.9 (6 pcs)	21212518-577								
	21520431-20 O-ring 15.5x1.5 (6 pcs)	21520431-20								
	3HAB3772-65 O-ring 131x2	3HAB3772-65								

Turning disk, type 2

Pos	Spare part no.	Part no. (WebConfig)	180/ 2.55	235/ 2.55	210/ 2.55	205/ 2.75	185/ 2.8	130/ 3.2	200/ 2.55 (ID)	170/ 2.75 (ID)
H.3	3HAC025571-001 <i>Standard</i> <i>Foundry Plus</i> <i>Foundry Prime</i> <i>Cleanroom</i>	3HAC025571-001		X	X	X	X	X		
	3HAB3409-65 M12x30, 12.9 (12 pcs)	3HAB3409-65								
	3HAB3772-61 O-ring 13.1x1.6 (12 pcs)	3HAB3772-61								
	3HAB3772-64 O-ring 150x2	3HAB3772-64								

1 Spare parts and exploded views

1.7. Spare parts - Gearboxes

1.7. Spare parts - Gearboxes

Gearboxes axis 1

Pos	Spare part no.	Part no. (WebConfig)	180/ 2.55	235/ 2.55	210/ 2.55	210/ 2.75	185/ 2.8	130/ 3.2	200/ 2.55 (ID)	170/ 2.75 (ID)
K.1	3HAC026114-005 RV320C-191.35 <i>Standard Foundry Plus</i>	3HAC026114-001	X	X	X	X	X	X	X	X
K.1	3HAC026114-004 RV320C-191.35 <i>Foundry Prime</i>			X			X			
K.1	3HAC026114-006 RV320C-191.35 <i>Cleanroom</i>	3HAC026114-001	X	X	X	X	X	X		

Gearbox axis 1 - other parts

Pos	Part no.	Description	Note
	3HAC024286-001	Cable guide	
	3HAC11581-4	Sealing, RV320C pipe	
	3HAC026892-001	Protection pipe	
	3HAB3772-97	O-ring (23x3.6)	3 pcs
	3HAB3772-93	O-ring (380.6x3.53)	Included in RV320C
	3HAB3409-86	M16x60, Gleitmo 12.9	12 pcs
	3HAA1001-186	Washer, (17x25x3)	12 pcs
	3HAB3409-74	M12x80, Gleitmo 12.9	16 pcs
	3HAC026169-001	Serrated washer, (12.6x18x1.8)	16 pcs

Continued

Gearboxes axis 2

Pos	Spare part no.	Part no. (WebConfig)	180/ 2.55	235/ 2.55	210/ 2.55	210/ 2.75	185/ 2.8	130/ 3.2	200/ 2.55 (ID)	170/ 2.75 (ID)
K.2	3HAC024316-005 RV550E-242.73 <i>Standard Foundry Plus</i>	3HAC024316-001	X	X	X	X	X	X	X	X
K.2	3HAC024316-004 RV550E-242.73 <i>Foundry Prime</i>			X			X			
K.2	3HAC024316-006 RV550E-242.73 <i>Cleanroom</i>	3HAC024316-001	X	X	X	X	X	X		

Gearbox axis 2- other parts

Pos	Part no.	Description	Note
	3HAB3772-91	O-ring (339.3x5.7)	Included in RV550E
	3HAB3409-84	M16x50, Gleitmo 12.9	20 pcs
	3HAA1001-186	Washer, 17x25x3	20 pcs
	3HAB3409-71	M12x60, Gleitmo 12.9	32 pcs
	3HAA1001-134	Washer, 13x19x1.5	32 pcs

1 Spare parts and exploded views

1.7. Spare parts - Gearboxes

Continued

Gearboxes axis 3

Pos	Spare part no.	Part no. (WebConfig)	180/ 2.55	235/ 2.55	210/ 2.55	210/ 2.75	185/ 2.8	130/ 3.2	200/ 2.55 (ID)	170/ 2.75 (ID)
K.3	3HAC021127-004 RV410F-270.176 <i>Standard Foundry Plus</i>	3HAC021127-001	X	X	X	X	X	X	X	X
K.3	3HAC021127-003 RV410F-270.176 <i>Foundry Prime</i>			X			X			
K.3	3HAC021127-005 RV410F-270.176 <i>Cleanroom</i>	3HAC021127-001	X	X	X	X	X	X		

Gearbox axis 3 - Other parts

Pos	Part no.	Description	Note
	3HAC17212-1	Sealing axis 2/3	
	3HAB3772-68	O-ring (276x3.53)	Included in RV410F
	3HAB3409-71	M12x60 Gleitmo 12.9	24 pcs
	3HAA1001-134	Washer, 13x19x1.5	24 pcs
	3HAB3409-69	M12x50 Gleitmo 12.9	33 pcs
	3HAC12703-1	Washer axis 3	3 pcs

© Copyright 2010 ABB. All rights reserved.

Continues on next page

1 Spare parts and exploded views

1.7. Spare parts - Gearboxes

Continued

Gearboxes axis 6 - Wrist, type 1

Pos	Spare part no.	Part no, (WebConfig)	180/ 2.55	235/ 2.55	210/ 2.55	205/ 2.75	185/ 2.8	130/ 3.2	200/ 2.55 (ID)	170/ 2.75 (ID)
K.6	3HAC037835-001 RV40E-81 <i>Standard Foundry Plus</i>	3HAC10828-10	X							
K.6	3HAC037835-002 RV40E-81 <i>Cleanroom</i>	3HAC10828-10	X							

Gearboxes axis 6 - Wrist, type 2

Pos	Spare part no.	Part no. (WebConfig)	180/ 2.55	235/ 2.55	210/ 2.55	205/ 2.75	185/ 2.8	130/ 3.2	200/ 2.55 (ID)	170/ 2.75 (ID)
K.6	3HAC037635-002 RV70F-125.8 <i>Standard Foundry Plus</i>	3HAC10828-13		X	X	X	X	X		
K.6	3HAC037635-001 RV70F-125.8 <i>Foundry Prime</i>			X			X			
K.6	3HAC037635-003 RV70F-125.8 <i>Cleanroom</i>	3HAC10828-13		X	X	X	X	X		

Gearbox axis 6 - Other parts

Pos	Part no.	Description	180/ 2.55	235/ 2.55	210/ 2.55	205/ 2.75	185/ 2.8	130/ 3.2	200/ 2.55 (ID)	170/ 2.75 (ID)
	3HAB3772-58	O-ring, 152.0x3.53 Included in RV40E Wrist type 1	X							
	3HAB7700-55	M8x40, Gleitmo 12.9 (8 pcs)								
	3HAA1001-172	Washer, 8.4x13x1.5 (8 pcs)								
	3HAB3772-65	O-ring, 131.0x2.0 Wrist type 1	X							
	21520431-20	O-ring, 15.5x1.5 Wrist type 1 (6 pcs)	X							
	3HAB3772-57	O-ring, 164.7x3.53 Included in RV70F Wrist type 2		X	X	X	X	X		

Continues on next page

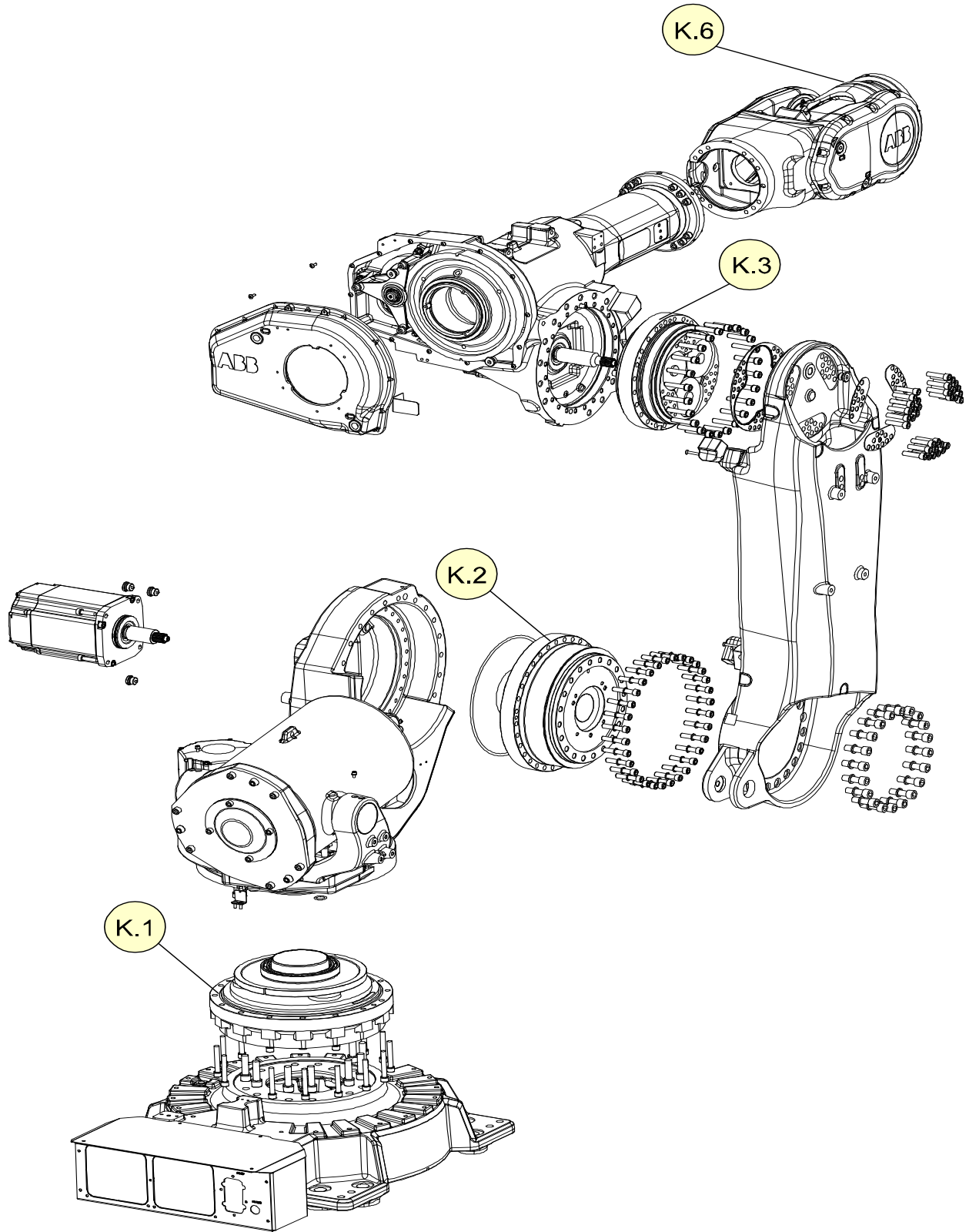
1 Spare parts and exploded views

1.7. Spare parts - Gearboxes

Continued

Pos	Part no.	Description	180/ 2.55	235/ 2.55	210/ 2.55	205/ 2.75	185/ 2.8	130/ 3.2	200/ 2.55 (ID)	170/ 2.75 (ID)
	3HAB7700-55	M8x40, Gleitmo 12.9 (18 pcs)								
	3HAA1001-172	Washer, 8.4x13x1.5 (18 pcs)								
	3HAB3772-64	O-ring, 150.0x2.0 Wrist type 2		X	X	X	X	X		
	3HAB3772-61	O-ring, 13.1x1.6 Wrist type 2 (12 pcs)		X	X	X	X	X		

Illustration gearboxes



xx0800000442

1 Spare parts and exploded views

1.8. Spare parts - Upper arm extenders

1.8. Spare parts - Upper arm extenders

Spare part list - Upper arm extenders

Pos	Spare Part no.	Part no. (WebConfig)	180/ 2.55	235/ 2.55	210/ 2.55	205/ 2.75	185/ 2.8	130/ 3.2	200/ 2.55 (ID)	170/ 2.75 (ID)
A	Arm extender 250 mm <i>Standard Cleanroom</i>	3HAC9760-3					X			
A	Arm extender 250 mm <i>Foundry Plus</i>	3HAC15859-2					X			
A	Arm extender 250 mm <i>Foundry Prime</i>	3HAC036330-001					X			
B	Arm extender 450 mm <i>Standard Cleanroom</i>	3HAC9760-7						X		
B	Arm extender 450 mm <i>Foundry Plus</i>	3HAC15859-3						X		
	Cable cover, 250 mm	3HAC9760-9					X			
	Cable cover, 450 mm	3HAC9760-10						X		

Arm extenders - Other parts

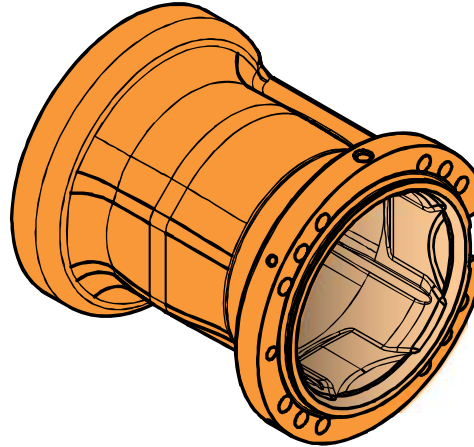
Pos	Part no.	Description	180/ 2.55	235/ 2.55	210/ 2.55	205/ 2.75	185/ 2.8	130/ 3.2	200/ 2.55 (ID)	170/ 2.75 (ID)
	3HAB3409-69	Hex socket head cap screw M12x50, 12.9 Gleitmo (12 pcs)					X	X		
	3HAA1001-134	Washer 13x19x1.5					X	X		
	9ABA107-56	Parallel pin					X	X		
	9ADA618-56	Torx pan head screw M6x16, 8.8-A2F (6 pcs)					X	X		

© Copyright 2010 ABB. All rights reserved.

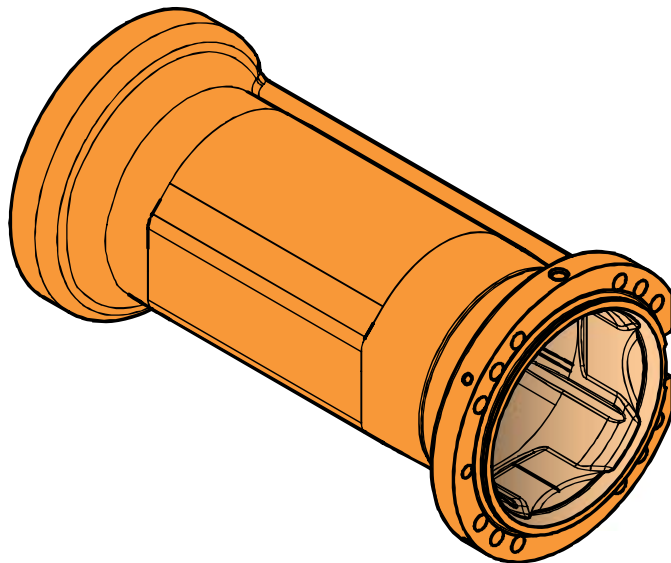
Continues on next page

Illustration Arm extenders

A



B



1 Spare parts and exploded views

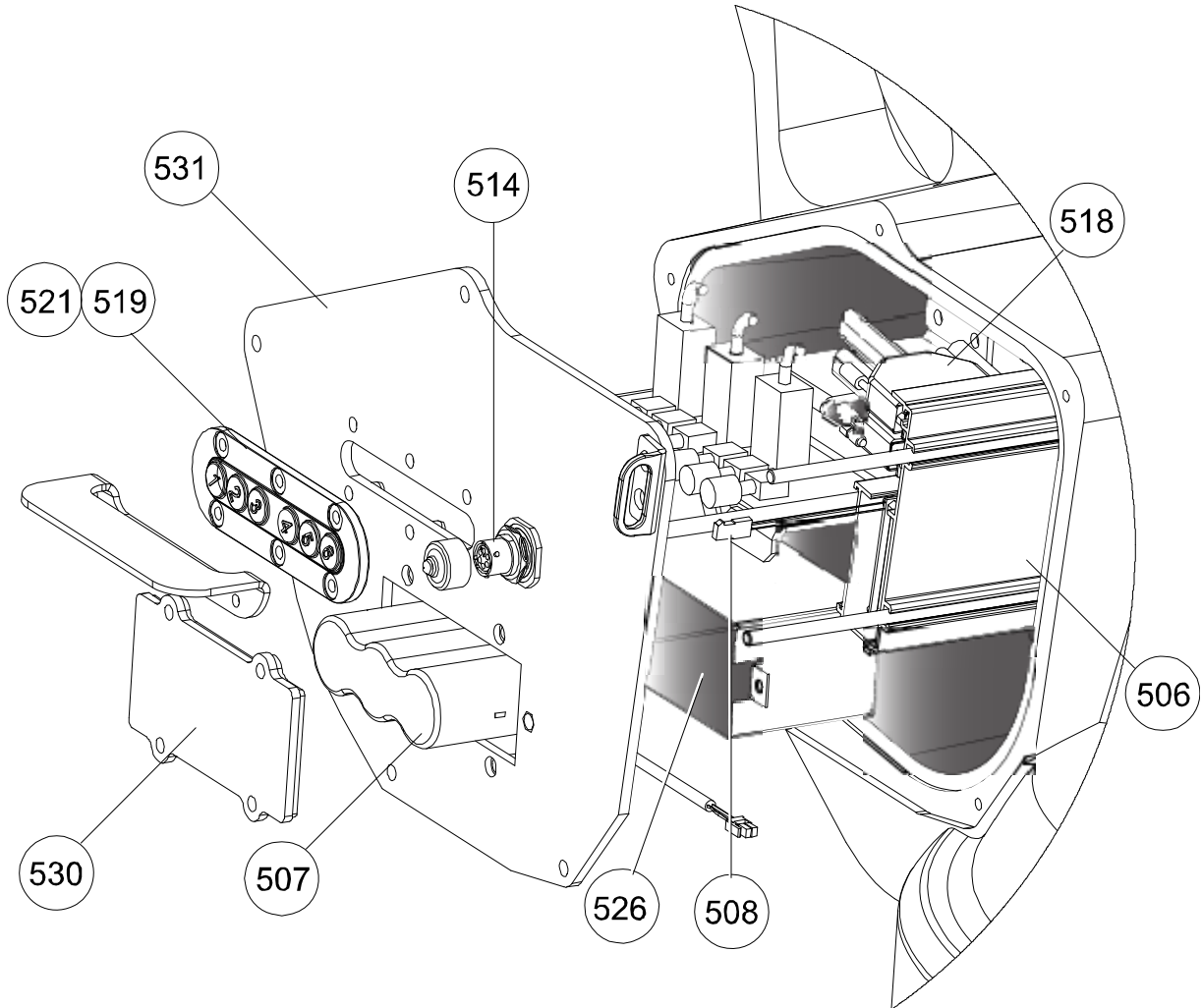
1.9. Spare parts - SMB

1.9. Spare parts - SMB

Spare part list - SMB

Pos	Part no. (WebConfig)	Description	180/ 2.55	235/ 2.55	210/ 2.55	205/ 2.75	185/ 2.8	130/ 3.2	200/ 2.55 (ID)	170/ 2.75 (ID)
506	3HAC031851-001	Serial measurement unit DSQC 633A	X	X	X	X	X	X	X	X
507	3HAC16831-1	Battery pack	X	X	X	X	X	X	X	X
508	3HAC13151-1	Cable battery/SMB	X	X	X	X	X	X	X	X
518	3HAC16035-1	Brakerelease unit with buttons DSQC 563	X	X	X	X	X	X	X	X
519	3HAC6499-1	Push button guard	X	X	X	X	X	X	X	X
530	3HAC14791-3	Cover battery box <i>Standard</i> <i>Foundry Plus</i> <i>Cleanroom</i>	X	X	X	X	X	X	X	X
530	3HAC026190-001	Cover battery box <i>Foundry Prime</i>		X			X			
514	3HAC15619-1	Cable FB7-SMB 1.7	X	X	X	X	X	X	X	X
521	3HAC026331-001	2BU Button Guard Plate	X	X	X	X	X	X	X	X
531	3HAC026688-001	Cover SMB	X	X	X	X	X	X	X	X
526	3HAC020105-001	Battery holder	X	X	X	X	X	X	X	X

Illustration Spare part - SMB



xx0800000443

1 Spare parts and exploded views

1.10. Spare parts - Manipulator harness

1.10. Spare parts - Manipulator harness

Spare part list - Manipulator harness

Pos	Spare Part	Part no. (WebConfig)	180/ 2.55	235/ 2.55	210/ 2.55	205/ 2.75	185/ 2.8	130/ 3.2	200/ 2.55 (ID)	170/ 2.75 (ID)
7	Manipulator harness Axes 1-6 <i>Standard</i> <i>Foundry Plus</i> <i>Foundry Prime</i>	3HAC024385-001	X	X	X		X			
7	Manipulator harness Axes 1-6 <i>Standard</i> <i>Foundry Plus</i> <i>Foundry Prime</i>	3HAC024386-001				X		X		
L	Manipulator harness Axes 1-6/MH axis 1-3 cable <i>Cleanroom</i>	3HAC029840-003	X	X	X	X	X	X		
8	Cable harness, manipulator Axes 1-4 <i>Standard</i> <i>Foundry Plus</i>	3HAC14940-1							X	
8	Cable harness, manipulator Axes 1-4 <i>Standard</i> <i>Foundry Plus</i>	3HAC16331-1								X
	Manipulator harness, Axis 5	3HAC14139-1	X	X	X	X	X	X		
4	Manipulator harness, Axes 5-6 <i>Standard</i> <i>Foundry Plus</i>	3HAC023717-001							X	X

© Copyright 2010 ABB. All rights reserved.

Continues on next page

1 Spare parts and exploded views

1.10. Spare parts - Manipulator harness

Continued

Manipulator harness - Other parts

Pos	Part no. (WebConfig)	Description	180/ 2.55	235/ 2.55	210/ 2.55	205/ 2.75	185/ 2.8	130/ 3.2	200/ 2.55 (ID)	170/ 2.75 (ID)
502	3HAC11774-3	Adapter, complete <i>Standard</i> <i>Foundry Plus</i> <i>Foundry Prime</i>	X	X	X	X	X	X	X	X
25	3HAC11774-3	Adapter, complete <i>Cleanroom</i>	X	X	X	X	X	X		
533	3HAC025079-001	Connection plate <i>Standard</i>	X	X	X	X	X	X	X	X
533	3HAC034080-001	Connection plate FP <i>Foundry Plus</i> <i>Foundry Prime</i>	X	X	X	X	X	X	X	X
342	3HAC029980-001	Bottom plate/Connection plate <i>Cleanroom</i>	X	X	X	X	X	X		
534	3HAC025080-001	Frame bracket <i>Standard</i> <i>Cleanroom</i>	X	X	X	X	X	X	X	X
534	3HAC033314-001	Frame bracket FP <i>Foundry Plus</i> <i>Foundry Prime</i>	X	X	X	X	X	X		
23	3HAC030090-001	Attachment plate <i>Cleanroom</i>	X	X	X	X	X	X		
24	3HAC13416-1	Protection cover <i>Cleanroom</i>	X	X	X	X	X	X		
532	3HAC025081-001	Base cover <i>Standard</i> <i>Cleanroom</i>	X	X	X	X	X	X	X	X
532	3HAC033318-001	Base cover FP <i>Foundry Plus</i> <i>Foundry Prime</i>		X			X			
21	3HAC030432-001	Connection plate Axis 3 <i>Cleanroom</i>	X	X	X	X	X	X		
22	3HAC13960-1	Connection plate Axis 3 <i>Cleanroom</i>	X	X	X	X	X	X		

© Copyright 2010 ABB. All rights reserved.

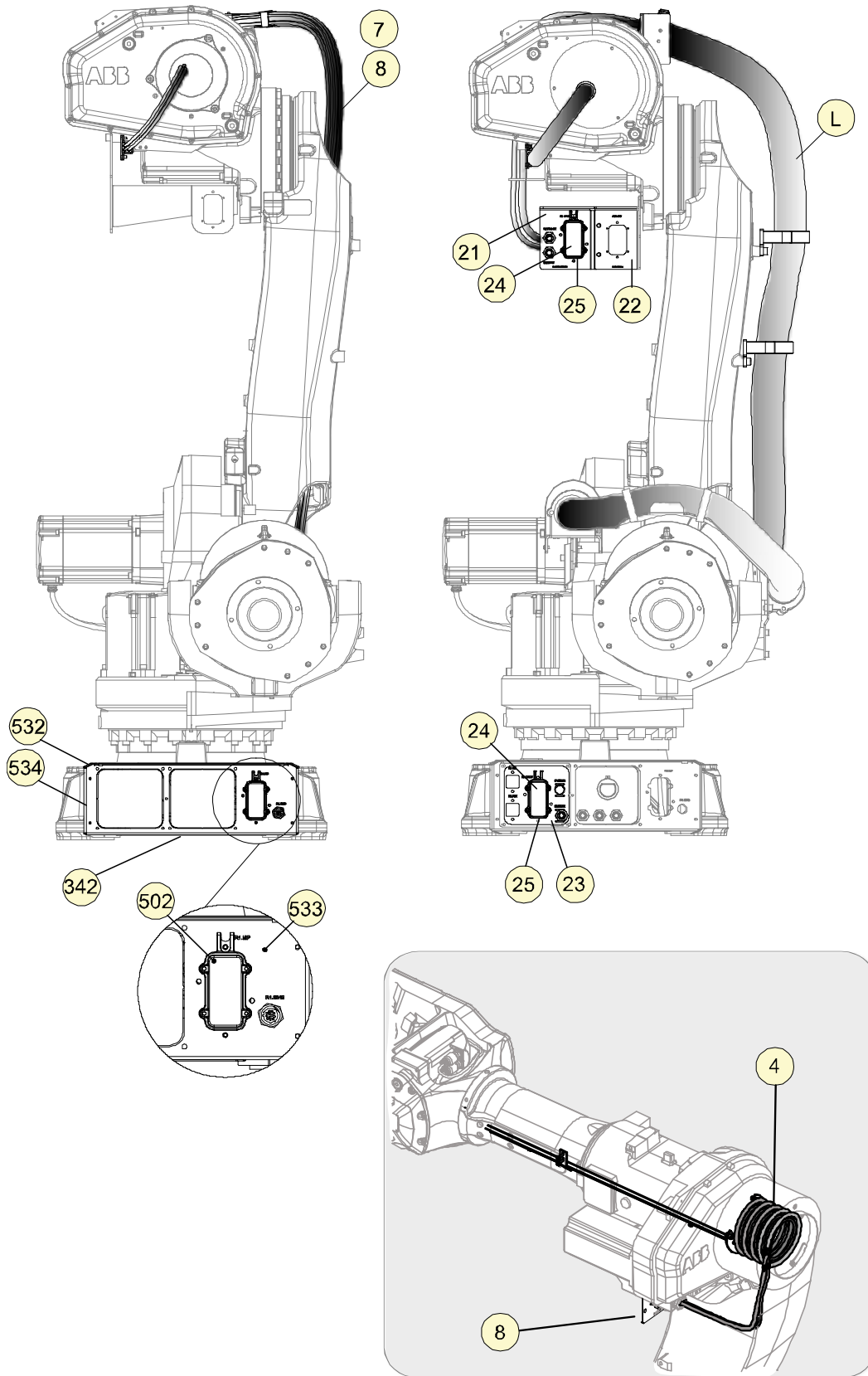
Continues on next page

1 Spare parts and exploded views

1.10. Spare parts - Manipulator harness

Continued

Illustration spare part manipulator harness



xx0800000444

© Copyright 2010 ABB. All rights reserved.